

First Annual Conference

Biobehavioral **RESEARCH** & Implications for **PRACTICE**

28/50

COLLABORATIVE
PERSPECTIVES ON
ADDICTION

First Annual Conference

May 3-4, 2013
Atlanta, GA



SOCIETY OF
ADDICTION PSYCHOLOGY

28
DIVISION

PSYCHOPHARMACOLOGY
AND SUBSTANCE ABUSE

Friday, May 3

- 7 am – 5 pm Registration
- 8 – 11:45 am Pre-Conference Workshop
- 12:45 - 1 pm Welcome!
- 1 - 2 pm Keynote (Shiffman)
- 2:15 - 3:45 pm Breakouts Round 1
- 4 – 5:30 pm Breakouts Round 2
- 5:30 - 7:00 pm Posters / Reception
- 7:00 pm Networking Dinners
(Sign up on Site)

Saturday, May 4

- 7 am – 5 pm Registration
- 9 – 10:30 am Breakouts Round 3
- 10:45 – 12:15 pm Breakouts Round 4
- 12:15 – 2:00 pm Networking Lunch
- 2 - 3:30 pm Breakouts Round 5
- 3:30 - 5:00 pm Keynote (Sullivan)
- 5:00 – 6:30 pm Social Hour/Reception
- 7:00 pm Baseball Outing
(Sign up on Site)

Sunday, May 5

- 9 am – Noon Division Joint Board Meeting

Continuing Education provided during the Collaborative Perspectives on Addiction Conference is provided by APA Division 50. APA Division 50 is approved by the American Psychological Association to sponsor continuing education for psychologists. Division 50 maintains responsibility for this program and its content. Sessions eligible for CE are marked with an arrow and the amount of CE available. Questions about Continuing Education should be address to Chad Rummel (crummel@apa.org)

A city rich in Southern history.

A city within a two-hour flight to 80% of the United

States. A city that houses the world's largest aquarium, tallest free-standing elevator, and

the home of several major corporations, including Coca-Cola, UPS, CNN, Porsche, and Home Depot. A city with all this **EXCITEMENT** is the only kind of city that can house our first annual collaborative-

based conference that will take a "from bench to bedside" approach that **INTEGRATES** animal research, laboratory research with human subjects, and clinical trials. This conference brings **TOGETHER** leaders from both divisions to facilitate lively debate and interchange and professional **DEVELOPMENT**

opportunities. Recognizing that too often we have "lost" professionals early in their careers, the program is designed to **ENGAGE** early career psychologists and trainees while providing all with the calibre of **RIGOR** and **SUBSTANCE** you have come to expect from our divisions. Along with our two outstanding keynoters and a panel of exceptional workshop speakers, welcome to Atlanta!

28/50



Sara Jo Nixon, PhD
2013 Co-Chair
Div. 50 President



Anthony Liguori, PhD
2013 Co-Chair
Div. 28 President



Jennifer Buckman, PhD
2013 Treasurer
Div. 50 Treasurer



John Kelly, PhD
2013 Sponsorships
Div. 50 Pres-Elect



Katie Witkiewitz, PhD
2013 Sponsorships
Div. 28/50 Member

SPECIAL EVENTS

SPECIAL PRESENTATION

by Harold Perl, NIH

Peeking Behind the Curtain of the NIH Funding Process: Tips for Preparing a Successful Grant Application

Applying for NIH research funding can be a daunting experience, especially in today's budget environment, but there can be an easier way. The instructor, a 23-year veteran of NIDA and NIAAA, presents an in-depth workshop that will help investigators at all levels of experience learn how to develop successful applications for NIH grants. Attendees will get an illuminating behind-the-scenes look at the application process and can benefit from the experience of a knowledgeable program official.

Networking Dinners

Atlanta is known for its chefs. On Friday night, reservations will be made at local establishments and sign-ups provided on-site to give you a chance to sample local cuisine with colleagues and new friends. Sign up at the registration desk before 2 pm Friday!

Social Hours

Two social hours will be provided to give a chance for additional networking with your peers. A bar will be available at each event, and hors d'oeuvres will be served. Poster sessions will occur during both social hours.

Mets vs. Braves

Baseball fans will meet up to head out to see the New York Mets take on the Atlanta Braves Saturday night. Sign up at registration desk by noon on Saturday if you plan to go and meet in the hotel lobby at 6:30 pm to catch cabs.

KEYNOTE SPEAKERS

Toward More Effective Relapse Prevention: Using Real-time, Real-world Data to Enhance Behavioral and Pharmacological Treatments



SAUL SHIFFMAN, PHD

Saul Shiffman, PhD, is a world-renowned researcher in the fields of behavior change and relapse, self-management and self-control, field research methodology, statistical analysis, and addiction and dependence. Since 1991, he has been a professor in the departments of psychology and

pharmaceutical science at the University of Pittsburgh. Dr. Shiffman has taught in the departments of psychology and psychiatry and behavioral medicine at various universities, including the University of South Florida, the University of Washington, and the University of Pittsburgh. Dr. Shiffman has authored or co-authored over 300 published papers on a variety of topics related to psychopharmacology, substance abuse, dependence, relapse, coping, and computerized assessments of behavior. A fellow of numerous professional societies, he was awarded the Society for Research on Nicotine and Tobacco's "Ovid Ferno Award for ground-breaking advances in clinical research." [1.0 CE](#)

Alcoholism and the Brain: Road to Ruin and Path to Recovery



EDITH SULLIVAN, PHD

Edith V. Sullivan, PhD, is professor of psychiatry and behavioral sciences at Stanford University School of Medicine and a neuropsychologist who has pioneered the study of alcoholism-related brain injury on selective cognitive and motor function. Dr. Sullivan is the recipient of a Senior Scientist Research

and Mentorship Award, a grant for international collaborations on alcoholism research, and an NIAAA MERIT award for studies of neural circuitry modification in alcoholism focused on frontocerebellar systems. Dr. Sullivan is a recipient of the Research Society on Alcoholism Distinguished Researcher Award and is author of more than 250 peer-reviewed papers and numerous chapters and reviews. [1.0 CE](#)

SCHEDULE AT A GLANCE

FRIDAY		Studio 2	Studio 6	Great Room1	Great Foyer	
	7:00 AM				Registration / Information	
	8:00 AM		Conducting Neuroimaging Studies (Mattson)			
	9:00 AM					
	10:00 AM		Pre-Registration Required			
	11:00 AM					
	12:00 PM					
	12:45 PM			Welcome!		
	1:00 PM			Shiffman Keynote		
	2:15 pm		Mediators of the Association of Depression with Smoking Cessation	Applying clinical neuroscience to the treatment of addiction		
	3:45 pm		Biobehavioral Perspectives on Mechanisms of Behavior Change: Brain, body, mind, and context	The Application of Clinical Neuroscience in Treating Addictive Disorders		
	5:30 pm					Social Hour / Poster Session 1
7:00 PM						
SATURDAY		Great Room 2	Studio 6	Great Room1	Great Foyer	
	8:00 AM	Breakfast			Registration / Information	
	9:00 AM		Co-morbid inhalant use and compulsory behaviors: Implications for red-flag assessments and strategies for clinical care	Neuroeconomics as a Framework for Translational Research on Addiction		
	10:30 AM					
	10:45 AM		Understanding and Treating the Co-occurring Disordered Client	Behavioral Economic Perspectives on Addiction		
	12:15 PM	Lunch & "Peeking Behind the Curtain of the NIH Funding Process"				
	2:00 PM		Medication Development: Translating Research into Practice	Interdisciplinary treatment teams for addictive disorders on college campuses		
	3:30 PM			Sullivan Keynote / Closing		
	5:00 PM					Social Hour / Poster Session 2
	6:30 PM					

SUNDAY: Div. 28 and Div. 50 Board Members will meet Sunday morning in Studio 3.

BREAKOUT SESSIONS

>FRIDAY, 2:15 - 3:30 PM<

Target: Student to Mid Career ^{1.5CE}

Applying clinical neuroscience to the treatment of addiction

Addiction is a chronic and relapsing disorder affecting millions of patients worldwide. Extensive preclinical research has elucidated some of the key neurobiological underpinnings of addiction, yet these findings have not been translated into clinical practice. This workshop will review addiction neurobiology while applying these insights to the understanding of clinical phenomenology and treatment of the disorder. Participants will learn how to integrate key findings from addiction neuroscience into the psychological treatment of addiction. Kelly Courtney, PhD; Lara Ray, PhD (**Great Room 1**)

Target: Early Career ^{1.5CE}

Mediators of the association of depression with smoking cessation

This study examined the mechanisms linking depression to smoking cessation in an ethnically diverse sample (N=424). Greater depression was associated with significantly lower cessation rates. Positive affect, stress, self-efficacy, expectancies of controlling negative affect by means other than smoking, affective withdrawal symptoms, and social support individually mediated the effect of depression on smoking cessation. However, when taking into account other significant mediators, only self-efficacy and sadness uniquely mediated the effect of depression on smoking cessation. Virmarie Correa Fernandez, PhD; Whitney L. Heppner, PhD; Diana Stewart, PhD; Amanda Mathew, MA (**Studio 6**)

>FRIDAY, 4 - 5:30 PM<

Target: All Levels ^{1.5CE}

Biobehavioral perspectives on mechanisms of behavior change: Brain, body, mind, and context

This session will introduce some "out of the box" biobehavioral perspectives on research and practice approaches to identifying and manipulating mechanisms of behavior change in addictions. The construct of arousal will be probed at the level of the brain, the body, the mind, and in social interaction. Implications for developing a multi-level explanatory framework to understand behavior change will be discussed. Video clips and audience-involved demonstrations will be included. Marsha Bates, PhD; David Eddie, MS; Jon Morgenstern, PhD; Robert Zucker, PhD, ABPP (**Studio 6**)

Target: Mid-Career

The application of clinical neuroscience in treating addictive disorders

This symposium highlights the application of clinical neuroscience in understanding and treating addictive disorders. Review of recent studies and the role of psychopharmacology and integrative treatment will be discussed. Meghan Marcum, PsyD (**Great Room 1**)

>SATURDAY, 9 - 10:30 AM<

Target: Early Career

Co-morbid inhalant use and compulsory behaviors: Implications for red-flag assessments and strategies for clinical care

The present study explored the relationship between compulsory behaviors, trauma history, and increased prevalence of inhalant abuse in females versus males among

adolescent substance users. A major focus of this study was to provide practical guidelines for clinicians treating adolescents with substance use disorders by way of assessment and treatment planning strategies. The findings are tied directly to strategies for treatment planning in a tangible attempt to bridge the divide between research and clinical practice. Robert Daniels, MA; Tommi Rivers, BA (**Studio 6**)

Target: Early Career ^{1.5CE}

Neuroeconomics as a framework for translational research on addiction

Neuroeconomics is an interdisciplinary research approach that has characterized neural abnormalities underlying pathological decision making in individuals who misuse a variety of substances. The four talks in this session will highlight recent neuroeconomics research in addiction, with a particular focus on neuroimaging studies of impulsive delay discounting and substance demand, along with pharmacological and genetic influences on these variables. An interactive panel discussion will focus on translational implications for interventions for addictive disorders. Michael Amlung, PhD; Charlotte Boettiger, PhD; James MacKillop, PhD; Joseph Schacht, PhD (**Great Room 1**)

>SATURDAY, 10:45 AM - 12:15 PM<

Target: Senior Level ^{1.5CE}

Behavioral economic perspectives on addiction

The field of behavioral economics, or the study of economic decision-making with behavioral experimentation, has contributed a great deal to the understanding of addiction and the altered decision-making patterns often seen in addiction. In this session, four behavioral economic researchers (Warren Bickel, James MacKillop, James Murphy, and Mikhail Koffarnus) will present recent research in this area and discuss the unique contributions of behavioral economics to the understanding of addiction. Warren Bickel, PhD; Mikhail Koffarnus, PhD; James MacKillop, PhD; James Murphy, PhD (**Great Room 1**)

Target: Student to Mid-Career

Understanding and treating the co-occurring disordered client

This session will explore the underlying characteristics of individuals with confounding mental health and substance use disorder issues and will explore specific treatment strategies for this population. Vito DonGiovanni, PsyD (**Studio 6**)

>SATURDAY, 2 - 3:30 PM<

Target: Mid-Career

Interdisciplinary treatment teams for addictive disorders on college campuses

This symposium describes the methods and benefits of integrated, interdisciplinary treatment team approaches for eating disorders and alcohol and other drug (AOD) abuse on a college campus. Irene Dalton, PhD; Abby Myers, PhD; Shannon Croft, MD; Kelita Wiley, MD (**Great Room 1**)

Target: Student to Early Career ^{1.5CE}

Medication development: Translating research into practice

This breakout session examines the development and implementation of medication for the treatment of alcohol and drug use disorders. Presentation 1 discusses development of an immunotherapy for methamphetamine use. Presentation 2 reports on the system changes required to promote the use of medication. Presentation 3 examines the use of medication within addiction treatment centers. Presentation 4 is a case study of medication use in a community-based treatment center participating in the Clinical Trials Network. John Gardin, PhD; Jennifer Loftis, PhD; Dennis McCarty, PhD; Traci Rieckmann, PhD (**Studio 6**)

POSTER SESSIONS

Friday, 5:30 - 7 PM

Great Foyer

Brief Addiction Monitor: Examining the Factor Scores as a Program Evaluation Tool

Mary Elizabeth Hammons, PhD; Erica Hoffman, PhD

Effects of Acute Stress and Alcohol Cues on Incentive Value in Heavy Drinkers

Michael Amlung, PhD; James MacKillop, PhD

Effects of Dependence Status and Craving Levels on P300 to Smoking Cues

Kimberly Fleming, PhD

Exploring the Relationship between University Undergraduate Drinking, Gambling, and Disordered Eating Behavior

Carlie Montpetit, BA

Heart Rate Variability, Negative Affect, and Personality Disorder Symptomology in Women Entering Treatment for Alcohol Dependence

David Eddie, MS; Marsha Bates, PhD; Beth Epstein, PhD; Bronya Vaschillo, PhD; Evgeny Vaschillo, PhD

Moderate Alcohol and Age: Effects on Set-Shifting

Lauren Hoffman, BA

Predicting Use of Alcohol Harm Reduction Strategies by College Student Drinkers

Erica Hoffmann, PhD

Refining the Neural Basis for Incentive Salience of Tobacco Cues in Smokers

Josh Gray, BA

Smoking, Obesity, and Preventable Disease, Death, and Disability

Cara Murphy, MS

Stress-Related Change in Risk-Taking Predicts Survival in a Smoking Relapse Paradigm Among Young Adult Smokers

Ty Schepis, PhD; Brian Tapscott, BA; Holly Welch

Substance Use Disorders Among Patients with Anxiety: Prevalence and Effect on Psychotherapy Outcomes

Gabriella Grimaldo, BS

The Impact of the Proposed Changes for the DSM-5 on Diagnoses of DUI/DWI Offenders

John Baley, MA; Norman Hoffman, PhD

Saturday 5 - 6:30 PM

Great Foyer

Stress-Related Risk-Taking More Likely in Early Stages of Abstinence Among Young Adult Smokers

Brian Tapscott, BA; Ty Schepis, PhD; Holly Welch

Brain Morphometry and Functional Connectivity in Cigarette Smokers

Luke Stoeckel, PhD

Comparing Delay Discounting of Hypothetical Money, Cigarette and Condom-Protected Sex in Opioid-Maintained Women

Dennis J. Hand, PhD; Evan S. Herrmann, MA

Delayed Reward Discounting as Predictor of Smoking Cessation

Ashley Blackburn; Monica Stojek; James MacKillop, PhD

Demographic and Smoking-Related Predictors of E-Cigarette Use Among Quitline Clients

Desiree Ghazi, BA

Energy Drinks Enhance the Motivation to Drink Alcohol

Cecile Marczinski, PhD

Moderate Alcohol Dose Effects on Sensory Gating

Alfredo Sklar, BA

Personalized and Adaptive Pharmacotherapy for Smoking Cessation

Jed Rose, PhD; Frederique Behm

The Effects of Forced Treadmill Running on Cocaine Self-Administration

Mark Smith, PhD; Justin Strickland; Maryam Witte; Elizabeth Pitts

The Influence of Monetary Cues on Attentional Bias in Smokers: Preliminary Findings from the Stroop and Visual Probe Tasks

John Acker, MS; James MacKillop, PhD

Time Perspective Predicts Substance Use by Disadvantaged Urban Emerging Adults

JeeWon Cheong, PhD; Jalie Tucker, PhD, MPH

Using Real-Time Measurements of Dopamine in Animals to Model Human Disorders

Donita Robinson, PhD

PRESENTER BIOGRAPHIES

JOHN ACKER, MS, is currently a fourth-year student in the clinical psychology program at the University of Georgia. He is a graduate research assistant in the Experimental and Clinical Psychopharmacology Laboratory under the direction of Dr. James MacKillop.

MICHAEL AMLUNG received his PhD in Psychology from the University of Georgia under the mentorship of Dr. James MacKillop. His research uses behavioral economics to explore decision-making in addiction. He also has expertise in using functional neuroimaging to examine the neural correlates of drug motivation and impulsive behavior. In June, Michael will begin a postdoctoral fellowship with Dr. Denis McCarthy in the NIAAA T32 Alcohol Studies Program at the University of Missouri.

JOHN BALEY, MA, is a first year graduate student at Western Carolina University working toward a master's degree in clinical psychology. His research interests include risk factors for relapse after substance abuse treatment, and long-term outcomes of addictions treatment. He is also interested in addiction as a public health problem.

MARSHA E. BATES, PhD, is Research Professor of Psychology at the Center of Alcohol Studies at Rutgers University. She directs the Cognitive Neuroscience Laboratory that promotes translation between basic human experimental and clinical science. She studies acute and chronic alcohol effects on memory, cognition, arousal regulation, and neurocardiac signaling. She is a Fellow of the APA, a previous President of APA Division 50, and recipient of their 2011 Distinguished Scientific Contribution Award.

WARREN BICKEL, PhD, is a Professor at the Virginia Tech Carilion Research Institute and Psychology Department at Virginia Tech, and the Director of the Addiction Recovery Research Center. He received his PhD from the University of Kansas.

ASHLEY BLACKBURN is an undergraduate student at the University of Georgia majoring in Psychology. Her main research interest is in the area of addictive behaviors. She plans to apply to a Ph.D. program in clinical psychology.

CHARLOTTE BOETTIGER, PhD, is Assistant Professor of Psychology at the University of North Carolina - Chapel Hill, where she directs the Cognition and Addition Biopsychology Lab; and is a faculty member of the Biomedical Research Imaging Center and the Bowles Center for Alcohol Studies. She holds an undergraduate degree in Integrative Biology from the University of California at Berkeley, and a PhD in Neuroscience from the University of California, San Francisco.

JEEWON CHEONG, PhD, is an Assistant Professor in the Department of Health Behavior in the School of Public Health at the University of Alabama at Birmingham. Her research focuses on adolescent substance use and statistical methods applied to health behaviors, including mediation analysis, longitudinal modeling, and evaluation of prevention/intervention programs.

VIRMARIE CORREA-FERNÁNDEZ, PhD, is a clinical psychologist, currently completing a postdoctoral fellowship at the University of Texas MD Anderson Cancer Center. Her research interests and foci are in understanding the intrapersonal and interpersonal determinants of smoking cessation and treatment response among vulnerable populations. She is especially interested in the development, implementation, and testing of culturally appropriate smoking cessation interventions for Latinos with comorbid affective and non-nicotine substance use disorders.

KELLY COURTNEY, MA, is an advanced PhD student in Clinical Psychology at the University of California, Los Angeles. Under the mentorship of Dr. Lara Ray, Kelly's research focuses on elucidating the biological pathways of craving, and subjective responses to alcohol

and drugs using neuroimaging and behavioral techniques.

SHANNON CROFT, MD, is a psychiatrist for adults and children, and a psychoanalyst. He was trained at Emory where he remains on the clinical faculty. Now working with students at Georgia Tech, his interests include collaborative systems of care and the treatment of students with eating disorders, autism spectrum disorders, and traumatic histories.

IRENE DALTON, PhD, is a licensed psychologist, Coordinator of Practicum Training, and member of the Eating Disorders Treatment Team at the Georgia Tech Counseling Center. She received her PhD in Clinical Psychology from Georgia State University. Her special interests include relationship concerns and couples therapy, Asperger's disorder, and health psychology.

ROBERT DANIELS, MA, is a therapist and clinical supervisor for chemical dependency services at Seven Counties Services, Inc., a large community mental health agency in Louisville, Kentucky. Mr. Daniels has worked with numerous federal grants and local programming concerning adolescent and young adult services. His experiences range from evidence-based practice implementation for youth and families of all ages, to program development and grant administration in the areas of substance use, justice and mental health treatment.

VITO DONGIOVANNI, PsyD, has over 38 years of experience as a clinician and administrator, including over 29 years treating individuals with co-occurring disorders. He was closely involved in the development of a co-occurring professional credential in Pennsylvania, and holds the Certificate of Proficiency in the Treatment of Alcohol and Other Psychoactive Substance Use Disorders awarded by the American Psychological Association. He has written a number of articles and has presented on co-occurring disorders at many state and

national conferences.

DAVID EDDIE, MS, is a PhD student in the Cognitive Neuroscience Laboratory at the Center of Alcohol Studies. His work focuses on understanding the autonomic substrates of emotion regulation and how these processes parlay into problem drinking, as well as their role in personality disorder pathology.

ELIZABETH EPSTEIN, PhD, is a research professor at the Clinical Division, Center of Alcohol Studies, as well as contributing faculty at the Graduate School of Applied and Professional Psychology (GSAPP) and the department of psychology graduate program. She is adjunct Clinical Associate Professor in the Department of Psychiatry, University of Medicine and Dentistry of New Jersey.

KIMBERLY FLEMING, MA, is a 3rd-year graduate student in clinical psychology at the University of Missouri. She conducts alcohol and addictions-related research under the direction of Dr. Bruce Bartholow in the Social Cognitive Neuroscience Lab. Her research primarily uses event-related potentials (ERPs) to investigate the neural correlates of risk factors associated with the development of addiction (i.e., alcohol sensitivity, dispositional craving).

JOHN GARDIN, PhD, Clinical Psychologist and Chief Clinical Officer for ADAPT (a licensed mental health and addiction treatment agency/FQHC serving Southern Oregon), brings addiction research to practice through his involvement in the National Institute on Drug Abuse Clinical Trials Network. He consults with US, Canadian, and European treatment programs.

DESIREE GHAZI received her Bachelor of Arts degree from University of South Florida. She is a research intern at the Tobacco Research and Intervention Program at the H. Lee Moffitt Cancer Center and Research Institute. She plans to continue her education in clinical psychology.

PSYCHOPHARMACOLOGY
AND SUBSTANCE ABUSE

28
DIVISION

28/50

The Division of Psychopharmacology and Substance Abuse promotes teaching, research, and dissemination of information regarding the effects of drugs on behavior.

SOCIETY OF
ADDICTION PSYCHOLOGY



Society of Addiction Psychology promotes advances in research, professional training, and clinical practice within the broad range of addictive behaviors including problematic use of alcohol, nicotine and other drugs and disorders involving gambling, eating, sexual behavior or spending.

JOSH GRAY is currently a 2nd-year graduate student in the clinical psychology program at the University of Georgia. His primary interests are cognitive neuroscience, genetics, and addiction. He is currently working on his MA, examining the association between dopaminergic genes, impulsivity, and pathological gambling.

GABRIELLA GRIMALDO is currently a senior at the University of North Texas. After graduation, she will attend Texas Tech University to obtain a PhD in clinical psychology. Gabriella has presented her current research at various McNair conferences, and will be presenting at the National Conference for Undergraduate Research in May.

MARY ELIZABETH HAMMONS, PhD, completed her doctoral degree in clinical psychology at the University of Central Florida, as well as a postdoctoral fellowship with an emphasis in substance use disorders at the Gainesville VAMC. She is currently the Health Behavior Coordinator and staff psychologist in primary care at the Lake City VAMC.

DENNIS HAND, PhD, is a Postdoctoral Fellow in the Department of Psychiatry at the University of Vermont. He conducts research under the supervision of Dr. Sarah Heil on contraceptive use by opioid-maintained women and withdrawal symptoms in opioid-exposed newborns. His expertise extends to basic behavioral pharmacology and preclinical drug development.

WHITNEY L. HEPNER, PhD, is an Assistant Professor in the Department of Psychological Science at Georgia College & State University. She obtained her doctorate in social psychology from the University of Georgia, and she completed a postdoctoral fellowship in Health Disparities Research at the University of Texas MD Anderson Cancer Center. Her research interests center on the role of mindfulness and motivation in health-relevant behaviors and psychological well-being.

EVAN HERRMANN, MA, is a graduate student in the Department of Psychology at the University of Vermont. Under the supervision of his advisor, Dr. Sarah Heil, Mr. Herrmann has conducted research toward developing better methods for HIV prevention education and exploring risky sexual decision-making processes in substance abusers.

LAUREN HOFFMAN is completing her second year as a graduate student in the Neurocognitive Laboratory at the University of Florida. She is currently working on her PhD in Psychology with an emphasis on Behavioral-Cognitive Neuroscience. Lauren is focusing her work on the neurobehavioral concomitants of alcohol use and abuse.

ERICA HOFFMANN received her PhD in Clinical Psychology from Bowling Green State University in Ohio. She is currently completing a postdoctoral fellowship at North Florida/South Georgia Veterans Health System. Her professional interests include substance use

disorders, dual diagnoses, harm reduction, and health psychology.

MIKHAIL KOFFARNUS, PhD, is a Research Assistant Professor at the Virginia Tech Carilion Research Institute and Psychology Department at Virginia Tech. He received his PhD from the University of Michigan in 2009.

JENNIFER M. LOFTIS, PhD, is a Research Scientist at Portland VA Medical Center and an Associate Professor of Psychiatry at Oregon Health & Science University. Her translational research program investigates the psychoneuroimmunological mechanisms contributing to addiction, cognitive impairment, and depression, in order to inform the development of new treatment strategies.

JAMES MACKILLOP, PhD, is an Associate Professor of Psychology at the University of Georgia. He received his PhD from SUNY-Birmingham in 2005.

MAGHAN MARCUM, PsyD, practices at Orange County Psychiatry & Addiction Medicine within the Neurosciences Institute at Hoag Hospital in Newport Beach, California. She carries a doctorate in clinical psychology with an emphasis in forensic psychology from Argosy University. She has worked with her patients in both outpatient and residential settings and within the hospital setting. Dr. Marcum's primary specialties include chemical dependency, trauma/anxiety disorders, forensic psychology, neuropsychological assessment and treatment for adolescents.

CECILE MARCZINSKI, PhD, is an assistant professor of psychology at Northern Kentucky University. Her research examines the combined effects of alcohol and energy drinks in human volunteers. This research is funded by an R15 grant from the National Institute of Alcohol Abuse and Alcoholism.

AMANDA R. MATHEW has a master's degree in psychology, is currently a PhD candidate at the University of Houston and a psychology intern at the Medical University of Carolina. She completed a predoctoral fellowship in cancer prevention at the University of Texas MD Anderson Cancer Center. Amanda's research interests include understanding the relationship between affective processes and cigarette smoking, and developing novel interventions for difficult-to-treat smokers (e.g., those with comorbid psychiatric and/or medical conditions).

SARAH MATTSON, PhD, is Professor of Psychology at San Diego State University and the associate director of the Center for Behavioral Teratology at SDSU. She is a neuropsychologist who has studied the brain and cognitive/behavioral effects of prenatal alcohol exposure in children with fetal alcohol spectrum disorders for 20 years. Dr. Mattson uses both neuroimaging and neuropsychological tools in her research and is author of more than 100 peer-reviewed papers and book chapters.

DENNIS MCCARTY, PhD, a Professor in the Department of Public Health & Preventive Medicine at Oregon Health & Science University, works at the intersection of policy, research and practice by assessing the organization, financing, and quality of prevention and treatment services for alcohol and drug use disorders.

CARLIE MONTPETIT is a recent undergraduate from the University of Calgary in Calgary, Alberta, Canada. She received an Honours degree in psychology working under the supervision of Dr. David Hodgins in the Addictive Behaviours Laboratory. Carlie plans to attend graduate school for clinical psychology this September, specializing in eating disorders and addiction.

JON MORGENSTERN, PhD, is Professor of Clinical Psychology in Psychiatry at Columbia University College of Physicians and Surgeons and Director, Substance Abuse Treatment, Columbia University Medical Center. In addition, he is a vice president at the National Center on Addiction and Substance Abuse at Columbia University. Dr. Morgenstern is a nationally recognized expert on the treatment of substance use disorders and a strong advocate of combining cutting-edge research with quality patient care. He currently divides his time between directing an active treatment research program that has been funded by the National Institutes of Health for the last 22 years and overseeing the integrated substance abuse treatment program at CUMC. He frequently serves as a consultant on issues related to substance abuse treatment to the National Institute of Alcohol Abuse and Alcoholism, the National Institute of Drug Abuse, and the Veterans Affairs health care system.

CARA MURPHY is a doctoral student in the Clinical Psychology Program at the University of Georgia. Her research interests include the interplay of addictive behaviors and eating.

JAMES MURPHY, PhD, is an Associate Professor of Psychology and Director of Clinical Training at the University of Memphis. He received his PhD from Auburn University.

ABBY MYERS, PhD, is a licensed psychologist and Coordinator of Alcohol and Other Drug treatment programs at the Georgia Tech Counseling Center. She received her PhD in Counseling Psychology from Georgia State University. Her professional interests include interpersonal trauma, substance abuse and addictions, diversity, relationships, disordered eating, depression and anxiety.

HAROLD PERL, PhD, was appointed Chief of the Prevention Research Branch at the National Institute on Drug Abuse in March 2012. From 2005 to 2012 he served as Senior Lead for Behavioral Research, Dissemination, and Training in NIDA's Center for the Clinical Trials Network. From 1989 to 2005, he served in various programmatic capacities at the National Institute on Alcohol Abuse and Alcoholism, culminating as Chief of the Health Services

Research Branch. Prior to 1989, he served as the Program Director for the Prevention Research Center in the Department of Mental Hygiene at the Johns Hopkins University School of Hygiene and Public Health. Dr. Perl earned a PhD and an MA in Clinical/Community Psychology from the University of Maryland and a BA in Psychology from the University of Rochester. He was named a Fellow of the American Psychological Association (Division 50) in 2009 and was honored with the APA Meritorious Research Service Commendation in 2011. He has published in scientific areas encompassing implementation of evidence-based practices, drug abuse treatment outcomes, the design of treatment and services research, homelessness, and social networks. Dr. Perl also maintains a clinical practice in mental health.

ELIZABETH PITTS is a graduate student in the Neuroscience Program at Emory University. She is a 2011 graduate of Davidson College where she majored in psychology with a concentration in neuroscience.

LARA RAY, PhD, is a licensed psychologist and assistant professor of psychology at the University of Colorado, Los Angeles. She received her PhD from the University of Colorado at Boulder, and completed her clinical internship and postdoctoral fellowship at Brown University Medical School. Dr. Ray has an active research program on the clinical neuroscience of addiction. She is interested in the intersection between clinical neuroscience and clinical practice.

TRACI RIECKMANN, PhD, an Assistant Research Professor in the Department of Public Health and Preventive Medicine at Oregon Health & Science University, is the PI for the Northwest Addiction Technology Transfer Center. She collaborates with American Indian communities and clinical providers to implement evidence-based practices for treating substance use disorders.

TOMMI RIVERS is a GAIN Clinical Training and Evaluation Consultant for Chestnut Health Systems, providing training to national audiences on clinical interpretation, assessment-driven treatment planning, and using data for evaluation. Over her career, Ms. Rivers worked on numerous federally-funded research studies testing the efficacy of behavioral and pharmacological treatments in patients with addiction and mental health problems. Ms. Rivers' experience ranges from individual patient assessment and planning to overall program evaluation and analysis.

DONITA ROBINSON, PhD, is an assistant professor of psychiatry and a member of the Bowles Center for Alcohol Studies at the University of North Carolina at Chapel Hill. Her research focuses on dopamine release and neural activity in rat models of alcohol drinking, drug exposure and adolescence. The goal is to understand the neural mechanisms of drug-taking and relapse, how pharmacotherapies affect those mechanisms, and why adolescence may be a particularly vulnerable developmental stage.

JED E. ROSE, PhD, is Director of the Duke Center for Smoking Cessation and Professor in the Department of Psychiatry and Behavioral Sciences at Duke University Medical Center. He is a leading authority on the treatment of tobacco addiction, and in the early 1980's led the initial studies paving the way for the development of nicotine skin patches. Since then, he has continued to develop novel strategies to enable smokers to quit smoking more successfully.

JOSEPH P. SCHACHT received his PhD in clinical psychology and neuroscience from the University of Colorado, Boulder in 2010, after completing his predoctoral internship at the Medical University of South Carolina (MUSC). He is currently an NIAAA-supported postdoctoral fellow at the Center for Drug and Alcohol Programs in the Department of Psychiatry and Behavioral Sciences at MUSC. His research focuses on the genetic and neurobiological substrates of substance use disorders.

TY S. SCHEPIS, PhD, is an Assistant Professor of Psychology at Texas State University. Dr. Schepis' expertise is in adolescent and young adult substance use, particularly on smoking and the relationship between prescription misuse and psychopathology. His work at this conference was supported by NIH grant R03 DA 030411.

SAUL SHIFFMAN, PhD, is a world-renowned researcher in the fields of behavior change and relapse, self-management and self-control, field research methodology, statistical analysis, and addiction and dependence. Since 1991, he has been a professor in the departments of psychology and pharmaceutical science at the University of Pittsburgh. Dr. Shiffman has taught in the departments of psychology and psychiatry and behavioral medicine at various universities, including the University of South Florida, the University of Washington, and the University of Pittsburgh. Dr. Shiffman has authored or co-authored over 300 published papers on a variety of topics related to psychopharmacology, substance abuse, dependence, relapse, coping, and computerized assessments of behavior, and has presented widely in medical and scientific forums. A

fellow of numerous professional societies (including APA Divisions 28 and 50), Dr. Shiffman was awarded the Society for Research on Nicotine and Tobacco's Ovid Ferno Award for "ground breaking advances in clinical research."

ALFREDO SKLAR graduated from Haverford College in 2007 with an undergraduate degree in psychology. He entered the University of Florida MD/PhD program in 2008 and began working in Dr. Sara Jo Nixon's lab in 2010. Mr. Sklar's current research deals with the effects of moderate alcohol doses on perception and cognition.

MARK SMITH, PhD, is a professor of psychology and neuroscience at Davidson College. He received his PhD from the University of North Carolina at Chapel Hill. His research interests include behavioral pharmacology and animal models of substance abuse.

DIANA W. STEWART, PhD, is a postdoctoral fellow at the University of Texas MD Anderson Cancer Center. Her research program has focused on promoting health behavior change, particularly tobacco cessation, to reduce cancer health disparities. She is particularly interested in understanding how variables such as health literacy, depression, and social support influence tobacco use and cessation for underserved smokers (e.g., low socioeconomic status, racial/ethnic minorities, mentally ill).

LUKE STOECKEL, PhD, is a clinical neuropsychologist who specializes in patient-oriented neuroscience research. He completed his undergraduate studies at Harvard College, his graduate studies at the University of Alabama at Birmingham, and his internship and postdoctoral training at Massachusetts General Hospital (MGH) and Harvard Medical School (HMS). He is currently an Assistant Professor of Psychology at HMS and an Assistant in Psychology in the Department of Psychiatry at MGH.

MONIKA STOJEK is a graduate student in the clinical psychology department at the University of Georgia. Her research interests are in the area of addictive behaviors,

dysregulated eating, and the intersection of these two fields. Monika is currently conducting her dissertation research, which examines motivation for palatable food items using addiction paradigms, such as mood induction, cue reactivity, and behavioral economics.

JUSTIN STRICKLAND is a junior at Davidson College where he is a double major in psychology and biology. His research interests include behavioral pharmacology and animal models of substance abuse.

EDITH V. SULLIVAN, PhD, is Professor of Psychiatry and Behavioral Sciences at Stanford University School of Medicine, and a neuropsychologist who has pioneered the study of alcoholism-related brain injury on selective cognitive and motor function. She is the recipient of a Senior Scientist Research and Mentorship Award, a grant for international collaborations on alcoholism research, and an NIAAA MERIT award for studies of neural circuitry modification in alcoholism focused on frontocerebellar systems. Dr. Sullivan is a recipient of the Research Society on Alcoholism Distinguished Researcher Award and is author of more than 250 peer-reviewed papers and numerous chapters and reviews.

BRIAN TAPSCOTT is currently a graduate student in the health psychology master's program at Texas State University. He completed his undergraduate work at the University of Texas at Austin, and plans to pursue a PhD in clinical health psychology. Research interests include health related behavior change, preventative care, and stress reduction.

JALIE TUCKER, PHD, MPH conducts community-based research guided by behavioral economics on substance misuse and change processes, including telehealth applications with problem drinkers attempting natural recovery, rural substance users living with HIV/AIDS, and disadvantaged emerging adults. APA service includes Division 50 President and Council Representative and member/chair of BPA and BSA.

BRONYA VASCHILLO, MD, is an associate research professor at the Cognitive Neuroscience

Laboratory at the Center of Alcohol Studies. She earned her MD at Saint Petersburg Medical University, Russia, and joined the Cognitive Neuroscience Laboratory in 2004 to participate in integrated cognitive psychology and neuroscience research.

EVGENY VASCHILLO, PhD, is an associate research professor at the Cognitive Neuroscience Laboratory at the Center of Alcohol Studies. His diverse experience includes biofeedback methods research, clinical biofeedback applications for treating patients with heart rate irregularities, and psychophysiology methods to analyze the condition of athletes.

HOLLY WELCH is a graduate student in the health psychology program at Texas State-San Marcos. Her research interests include perceived risk and risk communication. She has co-authored a study that examines the effect of pain on Perceptual Reasoning Index performance.

KELITA WILEY, MD, is certified by the American Board of Psychiatry and Neurology. She attended medical school at the University of Tennessee Health Science Center. She then completed an intern year at the University of Tennessee, followed by three years of psychiatry residency at Emory University. Dr. Wiley is a staff psychiatrist at Georgia Tech student health services.

MARYAM WITTE is a laboratory technician in the Behavioral Pharmacology Laboratory at Davidson College. She is a 2012 graduate of Davidson College where she majored in psychology with a concentration in neuroscience.

ROBERT ZUCKER, PhD, is Professor of Psychology in Psychiatry and Psychology at the University of Michigan. He is also Director of the UM Addiction Research Center and Director of the Substance Abuse Section in the Department of Psychiatry. He was trained at Harvard, has been involved in research, clinical work, and teaching on addictions for the past 40 years, and is a past-president of Div 50 and a recipient of RSA's Distinguished Scientist Award.

Thank you to the Friends and Sponsors of the first-inaugural Collaborative Perspectives on Addiction Conference!

SPONSORS

Committee on Division and APA Relations

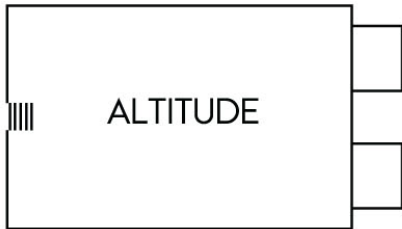
Journal of Studies on Alcohol and Drugs
www.jsad.com

FRIENDS

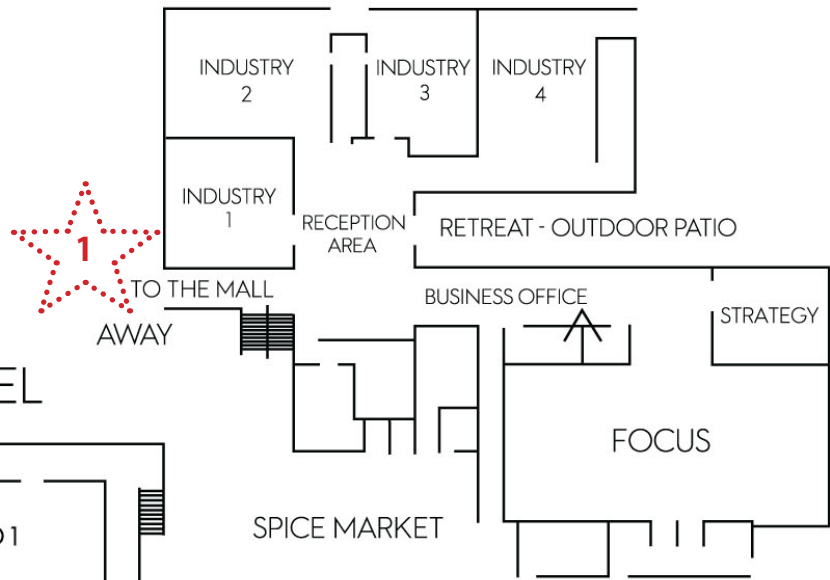
Marsha Bates, PhD
Jennifer Buckman, PhD
Perry Duncan, PhD
Raymond Hanbury, PhD, ABPP
Eileen Martin, PhD
Jalie Tucker, PhD, MPH
Katie Witkiewitz, PhD

HOTEL MAP

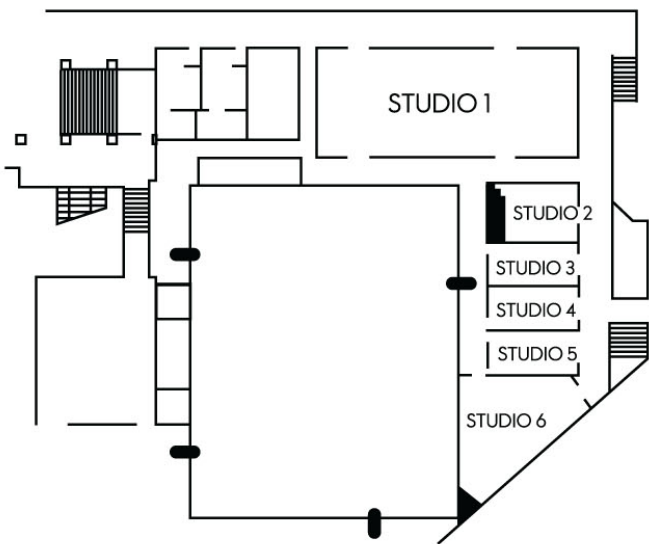
TOP FLOOR



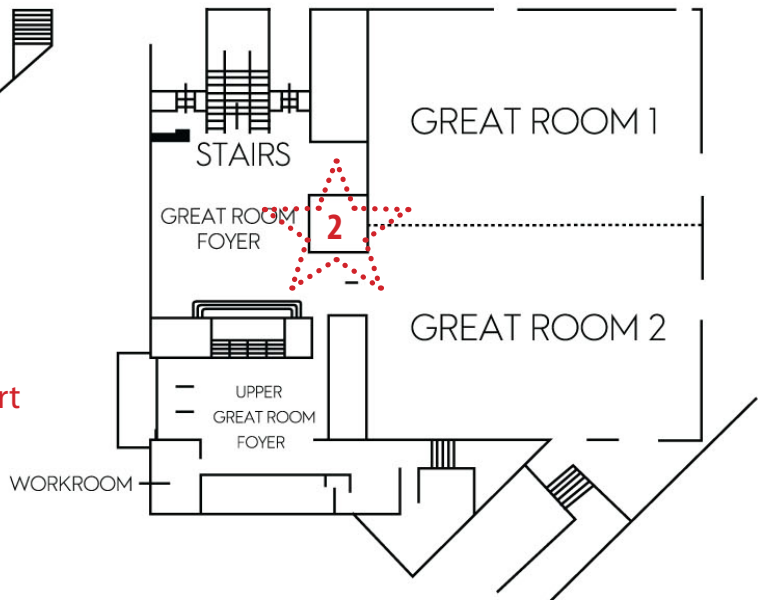
MEZZANINE LEVEL



LIVING ROOM LEVEL



LOWER LEVEL



- 1. Connected Shopping Mall / Food Court
- 2. CPA Registration / Information